

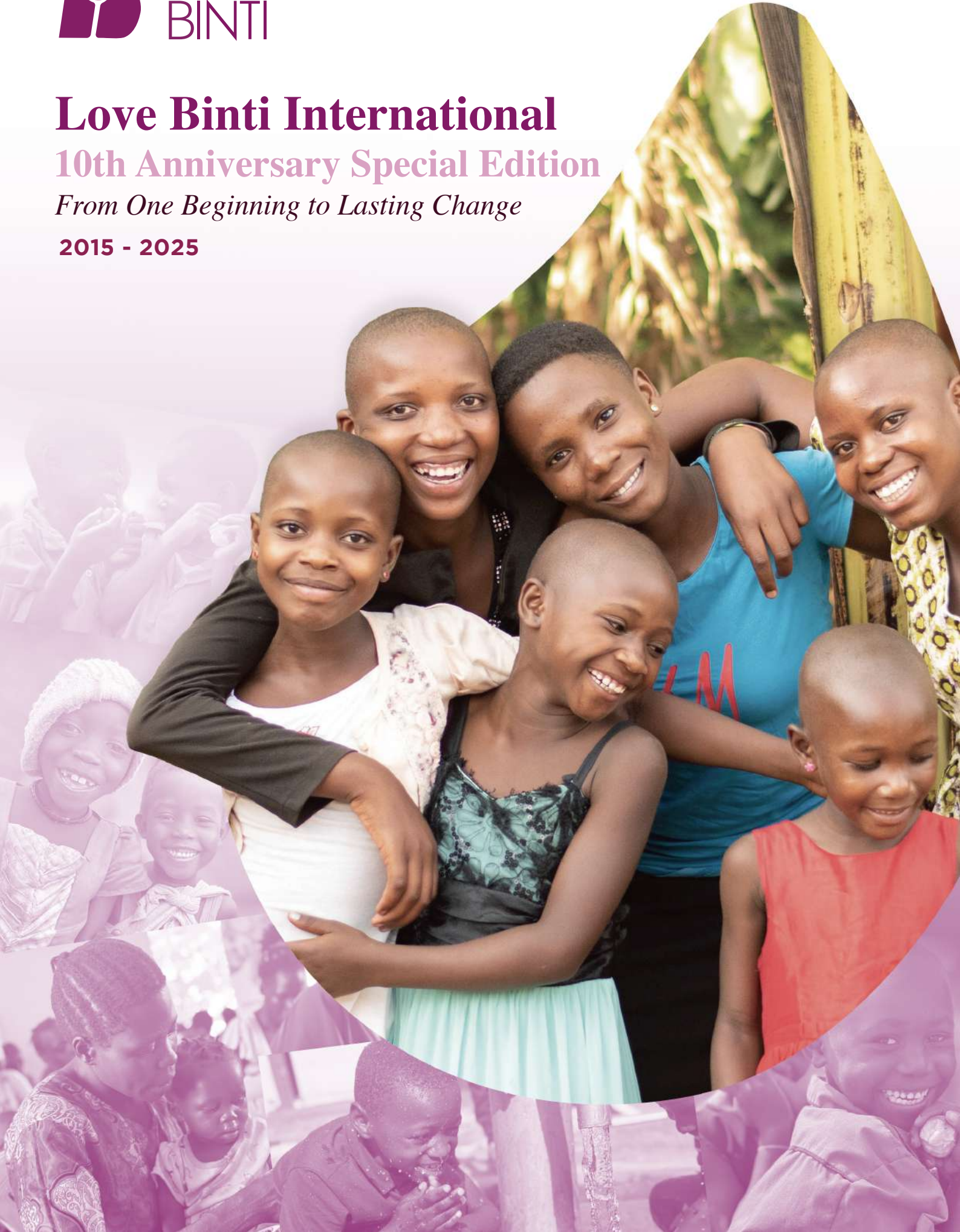


Love Binti International

10th Anniversary Special Edition

From One Beginning to Lasting Change

2015 - 2025





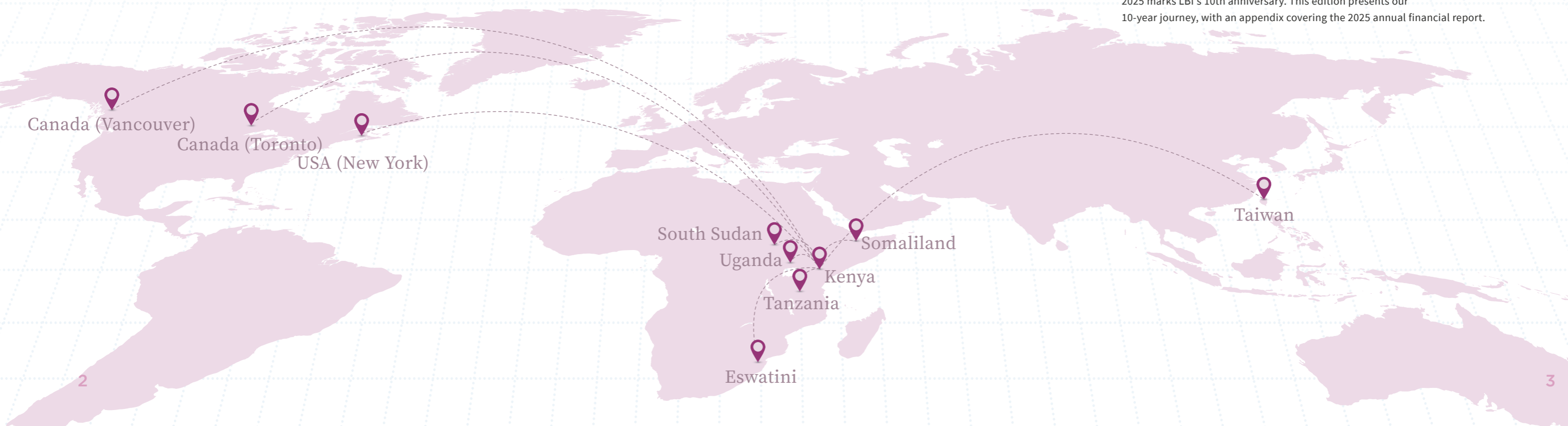
From One Beginning to an Expanding Reach

Love Binti International has expanded its mission to nine countries and regions by 2025 since taking our first step into Kenya ten years ago. With the support and trust that have carried us forward, we continue spreading love to the world, enabling lasting change across nations.

Table of Contents

Love Binti	4
A Message from the Chairperson & Founder	
Love Binti Introduction	
10-Year Timeline	
LBI Milestone	
Total Impact	
African Projects	14
Women's Hygiene Health Education	
WaSH Projects	
Community Empowerment	
Cornerstone	
The Light Demonstration Farm	
Taiwan Collaborative Impact	26
Taiwan Events Summary	
The Cycle of Her	
Love Binti Charity Run	
Organization & Vision	32
Our Partners	
Our Staff	
Next Decade	
Ways to Give	
Appendix	38
2025 Finance Report	

2025 marks LBI's 10th anniversary. This edition presents our 10-year journey, with an appendix covering the 2025 annual financial report.





From One Beginning to Deeper Commitment

Entering Our Tenth Year, We Still Choose to Walk Beside Girls

Looking back to 2015, Love Binti began with a simple hope: that girls could live with dignity and health, never miss school because of their period, never lose their sense of self to poverty, and never have their vision of the future limited by where they were born.

Over the years, we have learned that real change is never the result of a single action. From menstrual hygiene education and clean water infrastructure to women's empowerment and community self-reliance, our work has long moved beyond "providing resources." It is about walking alongside people — into their lives, their relationships, and their everyday reality.

We have seen girls walk to school with determination, women stand taller as skills and income restore their dignity, and young people become local leaders who build, maintain, and improve their own communities through knowledge and hands-on experience. And we have seen communities gradually grow into their own strength, moving toward a safer, more stable, and more hopeful future.

As we enter our 11th year, our reach has not slowed but grown deeper and farther. Love Binti is still learning, and still imperfect. But we believe that as long as we choose to stand beside girls, listening, being present, adjusting, and pressing forward, change will quietly take root in the smallest of places.

In our 11th year, we press on — not to grow larger, but to go deeper; not to be louder, but to create real change.

We are deeply grateful to every partner who walks this journey with us. Thank you for choosing, amid the busyness of your own lives, to think one step further for these girls, and for turning that care into a steady, long-term commitment. Because you treat their story as your own, girls are stepping into futures full of choice and possibility. This journey of transformation will continue, leaving its mark for years to come.

Chairperson
Sara Liu

Fulfilling Every Commitment, Walking with Communities Toward Self-Reliance

Reflecting on this past year, we achieved no dramatic breakthroughs — but step by step, we did what we promised, and did it better.

Since our founding, Love Binti has chosen to stay present and walk with communities. This year, we continued to deepen our work in Uganda while responding to different needs and contexts in Kenya, Tanzania, and Somaliland, working with local partners on water access and women's empowerment. Our principle remains the same: not to replicate a model quickly, but to respect context, understand differences, and move forward with care.

We continued investing in the most essential work: clean water access, women's and youth empowerment programs, and the infrastructure that sustains communities long-term. These efforts may not yield immediate results, but they are the building blocks of lasting self-reliance.

As our reach grows, we recognize that doing the work is not enough; doing it responsibly matters as much. This year, we strengthened internal processes and fostered clearer and more transparent accountability to donors, partners, and communities. To us, accountability is not a formality; it is a form of respect for people, resources, and commitments.

We believe true sustainability comes from long-term presence, continuous learning, and the ability to course-correct through difficulty. This year, we saw our team take on greater ownership and grow through mistakes — outcomes more valuable than any metric.

We are deeply grateful to everyone who walks with Love Binti: staff on the front lines, volunteers and donors behind the scenes, and partners who trust us and explore new possibilities with us. Because of you, this path can go further.

In the year ahead, we will keep our focus on doing things well, not simply doing more. In an uncertain world, may we continue to accompany more people toward self-reliance, with gentleness and resolve.

Founder
Elle Yang



From One Beginning, Creating Hope That Endures



A New Identity, the Same Commitment

Love Binti has walked alongside rural communities, bringing girls back to school through reusable menstrual pads and expanding access to clean water in dry and remote villages. We believe meaningful change is built gradually, a belief that shaped our new brand identity.

In the new logo, "B" becomes water ripples, symbolizing movement and renewal. A central droplet reflects our commitment to sustainable water, while the colors convey love, gentleness, and hope.

In past years, we were best known for menstrual education. Over time, we have engaged more deeply with water access, public health, and community sustainability, creating new possibilities for lasting change.

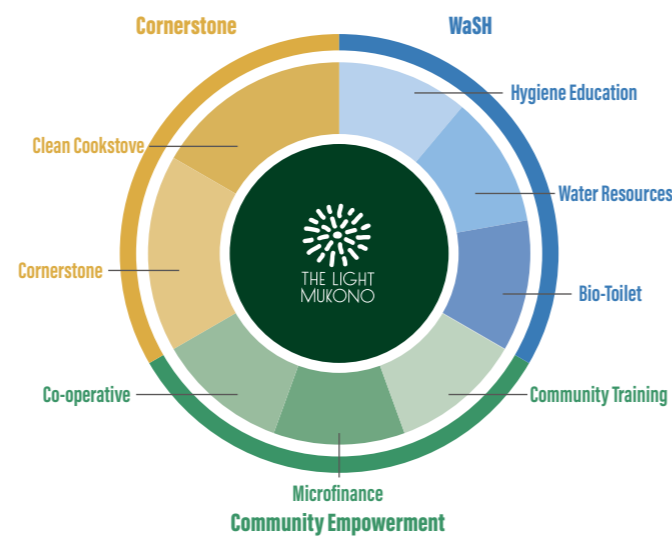
Everything Love Binti does begins with a single drop, creating ripples that reach far beyond where they began.

Steadfast in Our Mission

Extending the Power of Love to Every Corner

Our vision for the future is transformation — in both depth and reach.

Since our founding, Love Binti's work has been built around three core pillars: Cornerstone, Community Empowerment, and WaSH (Water, Sanitation and Hygiene). These pillars can be implemented independently or together, depending on the needs of each community. Through cross-sector and systemic strategies, we support communities in building self-reliance and enduring change.



WaSH PROJECT

Delivering comprehensive and sustainable water, sanitation, and hygiene solutions to underserved communities, improving health outcomes, enhancing quality of life, and fostering long-term development in underserved communities

Grounded in the SDGs, Driven by Community Impact

Guided by the UN SDGs, Love Binti is committed to creating meaningful change in underserved communities. Through clear impact indicators and a beneficiary-centered approach, we strive to ensure every initiative responds to local needs and contributes to lasting change. Over the past decade, we have implemented diverse programs across 9 countries and reached more than 3,000 communities, deepening our commitment to sustainable development.



Strategic Blueprint

Deepen × Expand × Co-Create

Building on a decade of experience, Love Binti looks ahead with greater clarity and vision. Through three key strategies, we will elevate the impact of our three core pillars.



In addition to expanding successful models into more countries, we also broaden the scope of our work. Through diverse programs and approaches, we respond to the evolving needs of communities at different stages, allowing this work to take root across borders and in new areas of impact.

We are not only resource providers, but long-term partners rooted in communities. We strengthen local capacity and leadership so that change grows from within, becomes self-sustaining and part of everyday community life.

We are evolving from service providers into collaborators who share experiences and practical approaches. By opening our journey and lessons to others, we invite more partners to walk with us, extending Love Binti's impact beyond our organization and co-creating a legacy of change.

From One Beginning to Infinite Impact

LBI Milestone

From a single starting point, Love Binti International (LBI) has grown into a network of international impact. We implement diverse initiatives across several African countries while sharing our expertise on global platforms.

As our presence abroad expands and global perspectives converge, we carry forward the expertise rooted in the red soil of Africa, working with a broader vision to bring meaningful change to more lives and to weave a future filled with hope.



- 2015** LBI launched in Kenya, starting outreach in Africa
- 2016** East Africa International Conference convened. The Light Demonstration Farm established in Uganda
- 2017** LBI Eswatini office established
North America outreach events held
- 2018** LBI Uganda office established
UN HLPF side event participation (New York)
- 2019** South Sudan refugee camp program launched
World Conference of Women's Shelters participation
- 2020** East Africa COVID-19 emergency relief response
South Sudan WaSH Project conducted

- 2021** "Lighting Up Africa" Documentary Exhibition held
Future Big Shot Award (The News Lens)
J&K Wonderland Switzerland Grants
- 2022** UN CSW 66 participation and sharing
Taiwan Sustainability Action Award
- 2023** UN Water Conference (2nd) participation
Recognized as an official organization by UN-Water
- 2024** Founder Elle Yang named a Ten Outstanding Young Woman
AidEx SDGs Programme Award – Gold Award
ARC Global Sustainability Awards (India) – Gold Award
- 2025** Joined Uganda Water and Sanitation NGO Network
Sustainthon Carbon Credits Forum (CarneuBank)

Community-Led Action, Change Built Over Time

Total Impact

Meaningful change grows through small actions. Over the past decade, we walked into dry lands and forgotten corners. From a spark of conviction, Love Binti has kindled a torch that brings transformation to communities. With every step that crosses borders, we witness the possibility of lives renewed and blooming once again.



Tailoring Training



Bio-Toilet



Agriculture Training



Reusable Menstrual Pads Workshop



Borehole Construction



Rainwater Filter System



Clean Cookstove



School Renovation

Project Outcomes

Hygiene Health Education

Reusable Menstrual Pads Workshop

155,117 Beneficiaries

7 Countries · 3,046 Workshops

WaSH

New Borehole & Rehabilitation

56,165 Beneficiaries

5 Countries · 88 Boreholes

Rainwater Filter System

8,759 Beneficiaries

2 Countries · 31 Systems

Bio-Toilet

9,856 Beneficiaries

33 Communities · 66 Bio-Toilets

Empowerment

Women's Tailoring Course

1,955 Students Graduated

3 Training Centers

Sustainable Agriculture Training and Cooperatives

456 Interns Graduated

9 Cooperatives · Harvest 10,000+ kg of Cabbage

Cornerstone

School Renovation

350 Beneficiaries

12 Classrooms

Clean Cookstove

775 Beneficiaries

155 Cookstoves

Cumulative Impact

233,433

Direct Beneficiaries

9

Countries

8

Project Types

10

Years

From One Beginning to Diversified Action

Women's Hygiene Health Education



Menstrual Dignity

Across rural Africa, period poverty forces girls to manage menstruation without basic resources. Some have to sit on the ground, waiting for their periods to pass. Without products or education, many miss school or drop out, limiting their future.

Love Binti has organized more than 3,000 reusable menstrual pad workshops, reaching over 155,000 participants through hands-on sewing instruction and menstrual health education.

We invite not only girls and women but also boys and men to take part in these activities, encouraging open conversations about menstruation, reducing stigma, and building broader understanding and support. When men become advocates as well, understanding spreads through families and communities, turning awareness into lasting action.



We have trained more than 30 "seed teachers" who bring menstrual health education into remote villages where access to information remains limited. We also produced tutorial videos on sewing reusable pads in three languages: English, Swahili, and Acholi (a major language in northern Uganda), making menstrual health knowledge accessible to communities across different languages and backgrounds.

Somaliland Projects

In Somaliland, we partner with Edna Adan Hospital and plan to integrate anti-FGM awareness and education, collaborating with healthcare workers, mosque leaders, and community women. We are also developing a birth kit program to establish a local supply chain for essential birth supplies, including delivery cloths, sterile gloves, and baby caps, helping to reduce maternal and newborn mortality.



From One Beginning to Diversified Action

WaSH (Water, Sanitation and Hygiene)

New Borehole and Rehabilitation

In the past, women and children walked over three kilometers daily, spending hours collecting water that was often unsafe and shared with livestock, exposing communities to waterborne diseases. The arrival of boreholes changed this, providing clean water and freeing families from hours of daily travel. Children can return to school, and women gain time for productive work, helping communities move toward a healthier, more prosperous future.



Unsafe local water sources

Love Binti has drilled and rehabilitated 88 boreholes across five countries. Through field assessments with local leaders and community members, we gain a deeper understanding of local needs, cultural context, and water challenges. We also support the establishment of water management committees, enabling communities to take ownership of their water resources and ensuring sustainable access to safe water.



Hygiene Promotion



We are grateful to Wan Hai Lines for their long-term support of our WaSH projects. Of our 88 total boreholes, 51 were completed through this partnership, along with 7 rainwater filter systems and 60 bio-toilets, supporting 88 schools and communities in improving their living conditions. This partnership has allowed change to take root steadily, growing into a force that will carry communities forward for years to come.





Rainwater Filter System

In many communities and schools, borehole water intended for drinking is also used for daily needs such as handwashing and cleaning, placing additional strain on already limited water supplies. To address this, Love Binti has built rainwater filter systems that collect and filter rainwater for daily use.

We have constructed 31 systems, helping strengthen school water supply, support student health and education, and contribute to broader social and economic development.



Bio-Toilet

Bio-toilets provide students, especially girls, with a safer and more dignified sanitation environment. Many school latrines are unstable, lacking doors, and unsanitary, exposing children to safety risks and disease. Love Binti has constructed 66 bio-toilets and taught schools to cover waste with leaves and ash, reducing groundwater contamination and transforming waste into fertilizer, supporting sustainable agriculture — giving children a healthier place to learn and grow.



Existing School Pit Latrine



Love Binti Bio-Toilet

From One Beginning to Diversified Action

Community Empowerment



Women's Empowerment

Love Binti invites women to participate in vocational training in tailoring and beauty services. Beyond technical skills, the courses incorporate health and gender education, as well as business and financial management training. Students learn to understand market needs, develop marketable products, and manage their finances, building practical skills they can apply directly to their livelihoods. By turning these skills into income, graduates can support themselves, their families, and their wider communities. To date, more than 1,900 women have graduated from the program.

Love Binti partners with three training centers in Uganda: Solidarity Eden Foundation, Wasin Africa Foundation, and Makerere University.



Agricultural Empowerment

Love Binti trains youth farmers and equips them with practical agricultural skills they can bring back to their home communities. Our trainees come from Uganda, Kenya, South Sudan, and Tanzania, allowing knowledge and experience to spread across different parts of Africa. The Light Demonstration Farm serves as our operational base, where agricultural training and sustainable farming practices support community self-sufficiency.

Through the Love Binti Cooperative Program, farmers receive training in improved techniques and market linkages. To date, over 10,000 kg of cabbage have been harvested. Beyond fresh produce, we have expanded into value-added products, including sesame oil, honey, herbal tea, and cabbage dumplings, diversifying income sources and strengthening community self-reliance.





From One Beginning to Diversified Action Cornerstone



School Renovation

In many rural areas of Uganda, classrooms are often left unfinished, with bare brick walls, no windows, and no doors. Rain enters, dust fills the air, and students learn on dirt floors, often without electricity or lighting. These conditions disrupt learning and make it harder for children to pursue their education.

Love Binti has renovated 12 classrooms, helping create safer and more supportive learning spaces for students — bringing children a stronger foundation for their future.



Before Renovation



Clean Cookstove

In rural Uganda, many households still rely on the three-stone stove — an open fire that produces large amounts of smoke from incomplete combustion, posing serious health risks. The unstable structure also increases the risk of burns, especially when children are nearby.

Love Binti has provided 155 clean cookstoves based on rocket stove design, improving combustion efficiency and significantly reducing harmful smoke and emissions. The enclosed structure enhances safety by containing fire and lowering burn risks. Built with local materials such as mud bricks and clay, the stoves offer a more sustainable and environmentally friendly solution. We also teach families how the stoves improve health and how to use them effectively over the long term.



From A Light, Where Change Takes Root

The Light Demonstration Farm



The Light is nestled in Mukono, Uganda, beside the shores of Lake Victoria — the heart of Love Binti's work in Africa. Since 2016, it has been the living proof of our three core pillars in action, where everything we do in Africa is woven together on a single piece of land.



The farm hosts boreholes, rainwater systems, and bio-toilets, forming a complete model of our projects in one place, giving visitors and partners a clear picture of our values and how each initiative supports the others.



Our interns and team members eat what they grow here every day, practicing farm-to-table living as a simple, daily reality. We believe that real change can only be felt when you stand in it.

One Farm, Endless Possibilities

The Light is more than an operational base for Love Binti — it is a living example of how sustainable development can truly take root. Through our cooperative and agricultural internship programme, we mentor farmers across nine partner farms in cultivating and harvesting cabbage while training interns from across East Africa, equipping them with skills to bring home, allowing the impact of The Light to spread far beyond its borders.



We are grateful to Wan Hai Lines for their long-term container donations, which helped shape the physical foundation of The Light. From storing reusable pad materials to housing solar equipment, the support has helped The Light become a place capable of carrying possibilities.

The Light is a lamp, but also a beginning. It reminds us that real change is never the result of a single action, but what becomes possible when many efforts come together on the same piece of land.



Bound by Love: The Collective Strength of Us

Taiwan Events Summary

Stitch by Stitch, Weaving Hope Together

Over the past decade, Love Binti has held over 140 talks, workshops, and charity sales across Taiwan, reaching more than 10,000 people in schools and organizations, gently bringing women's issues that are rarely discussed openly into everyday life.

At each workshop, many participants encounter "period poverty" for the first time, reflecting on their own relationship with menstruation. A small piece of cloth becomes more than a sanitary product — it represents dignity and the power of choice. In schools, menstruation is no longer just a term in a textbook, but something girls can speak about openly as part of their own experience.



Love Binti has organized workshops and talks across 15 cities in Taiwan.

Change spreads like ripples through every conversation at our events. For Love Binti, this is a journey of building trust over time. Some people attend a single event and begin following our work. When these issues no longer feel distant, understanding can take root, and care can continue to grow in communities across the country.

Taipei | New Taipei | Taoyuan | Hsinchu | Hualien | Taitung | Kinmen
Taichung | Changhua | Nantou | Yunlin | Chiayi | Tainan | Kaohsiung | Yilan



Bound by Love: The Collective Strength of Us

The Cycle of Her

Beyond Period Poverty

Love Binti has joined "The Cycle of Her" twice. In 2025, we presented our work in Africa through an exhibition for the first time — inviting the public to see, understand, and act.



From a Piece of Cloth to Everyday Life

The exhibition connected our work in Africa through four themes: menstrual education, clean water, community empowerment, and infrastructure, each playing a distinct role in building a future where girls and communities can truly thrive.



Step into Her World

A red wall symbolizing menstruation invited visitors to listen to girls' stories. A mother elephant installation represented women's strength and protection. Four cone-shaped structures carried supporters' notes and wishes. The exhibition was not just a display of ideas — it was a shared space for collective action.

Connecting Different Perspectives

We held three talks featuring writers, documentary directors, the founder, and field partners, offering perspectives from personal observations to years of field experience, helping audiences understand Africa and the realities faced by women.



From the Exhibition to the Field

With the support raised during the event, we drilled and rehabilitated two boreholes in Uganda, improving water access for more than 1,500 residents and students. Cleaner water means more time for children in school and women building better lives.

Sewing Change with Hands

We also invited visitors to join a reusable pad workshop, where over 100 participants sewed pads that will be sent directly to girls in East Africa. Some parents brought their children, turning the experience into a meaningful lesson in body awareness, respect, and empathy.

Several corporate teams also participated. As employees sewed and talked together, the activity strengthened team bonds while reminding them that their actions can become real support for others around the world.



"The Cycle of Her" brought together advocacy, practical work, and public participation in one place — reminding us that change is never a single event, but a journey sustained by people who keep moving forward. Three days may be brief, but the understanding and connections formed quietly between people have a way of lasting far longer.

Thank you to everyone who walked alongside us and made this change possible.

Bound by Love: The Collective Strength of Us

Love Binti Charity Run



Love Binti Runs Beyond

Running Toward Africa.

In 2025, Love Binti organized a charity run, hoping more people would learn about "period poverty", recognize the realities girls face, and take part in meaningful change.

We believe supporting girls does not require traveling far. Change can begin with a single step, taken right where we are.



Bringing the issue into everyday life

Love Binti has long worked in Africa on menstrual education, clean water, and empowerment programs, yet because these issues often exist in remote villages, they are rarely seen or understood.

We chose a charity run as a way to bring people closer to these issues, allowing advocacy to move beyond talks and online campaigns, and take root more deeply in everyday life.



Where Every Step Carries a Message

We set up a charity booth to introduce our work in Africa. Many runners stopped by to learn more about the projects and offer their support. This love brought smiles to girls thousands of miles away.



The Journey Continues

We are thankful to all runners, community participants, and sponsors who made this event possible. Together, you helped turn this charity run into a local movement that brought health education, gender awareness, and the spirit of public action.



Not an end, but a beginning

When more people take action in their own way, these seemingly small steps can gradually grow into real change.

Love Binti will continue advancing advocacy and action, working toward a future where girls can live with greater opportunity and dignity.



From One Beginning to the Power of Together

Our Partners

Love Binti's ten-year journey has been woven together by countless caring hands — companies, local organizations, and individuals who share our values and believe in our mission.

Change grows from the connections we build. We are deeply grateful to every partner who trusts in us. Because of you, Love Binti can carry care further and transform support into concrete actions across the world. This achievement belongs to everyone who walks alongside us.

Asia	17Support	Jooin Now
	4Gamers	King's Satoyama School
	Agood	Mbran Filtra
	Mako Food Machine	National Taiwan University (IPCS)
	Cube Media	NATWA
	Chirle Brown Backer	NIXI STRATEGY
	Cornerstone Social Enterprise	O'mine
	Chung Yuan University - Service-Learning Center	RSL
	Efun Strategy	Taipei International Women's Club
	Fami Cloud	Taiwan Grace
	Gospel Operation International (GOI)	Taiwan Ministry of Foreign Affairs (MOFA)
	Good Food Everyday	Taiwan Seeds
	Good Moon Mood	Tianhe Education Foundation
	Hwa Ger Food International	TSEIES
	Hwa Han Frozen Food Industrial	United Renewable Energy
	HWC Roasters	Wang & Son Building Workshop
	International Cooperation and Development Fund (ICDF)	Wild Bear Technology
Jia Wei & Co., CPAs	Yin's Handmade Studio	
	Zeng Hsing Industrial	
	Zonta International 31	

(Sort alphabetically)

Africa	Agape Earth Coalition	Makerere University College of Adult Education
	Aitenga	Miracle Ministries
	Comfort Africa	Menstrual Hygiene Management (MHM)
	Edna Adan Hospital	Mukono District Local Government
	From Above	Simoshi Limited
	Galiwaer Ltd	Solidarity Eden Foundation
	Gospel Operation Africa Uganda	Union Vision Mission Uganda
	Harvest Church Fellowship	Wasin Foundation
	Hon. Lamwaka Margaret	Yeshua living water
	Kaliro Local Government	Youth Go Green
	Kikaaya Zone B local Council	

(Sort alphabetically)

WAN HAI LINES LTD. WAN HAI CHARITY FOUNDATION



Wan Hai has been with us for over half of the journey. With their trust and support, we have implemented water projects in more than 80 communities, planting seeds of change across Africa's red soil.



Buddhist Compassion Relief Tzu Chi Foundation



Since 2021, Tzu Chi has partnered with Love Binti on several initiatives, including menstrual health education, supporting more than 100 communities and nurturing a compassionate force for their future.





A Decade of Dedication, Expanding Love Across the Equator

Our Staff

Within Love Binti, we are not only practitioners of hope, but guardians of a vision. The road is not without storms, yet the steady trust of our partners becomes the courage that carries us forward across the red soil.

This support strengthens us to face each challenge with gentleness and resilience. We are not simply carrying out projects — together, we are weaving a shared map toward self-reliance, built from collective care and hope.

Taiwan Team

Andrea Chiang
Elle Yang
Giselle Chung
Ina Wang
Isaac Chao
Joane Peng
Sara Liu
Zoe Huang
(Sort alphabetically)

Africa Team

Aisha Kirabo	Neema Dumo
Alice Namujju	Patricia Akoth
Caxton Joel Hasahya	Paul Kyibengo
Dan Waswa	Racheal Mutebe
Excel Swalle Kafeero	Romeo Rolland Businge
George Mugeme	Sharon Anyango
Gideon Ssematimba	Suzan Abello Okae
Jackline Nakandi	Sarah Mbabazi
James Opio	Ton Bosa
Joyce Nabuto	Yaweri Tuwu
Justus Ouma Juma	(Sort alphabetically)



Together, Impact Reach Deeper, Wider and Further

Deepen

Meaningful impact grows from consistent commitment. In the decade ahead, Love Binti will deepen our programs and strengthen local capacity, enabling initiatives to take root within communities. When this happens, change can grow naturally, and self-reliance becomes part of everyday life.

Expand

Love Binti sees many needs that remain unmet. We will keep expanding both the scale and scope of our work, reaching more regions and communities with different needs and challenges. Expansion is not only about growing our presence, but also about carrying hope across distances, allowing it to take root in new places.

Co-create

In the years ahead, Love Binti will evolve from a service provider into a facilitator of capacity-building and shared learning. By documenting our practical experience, we invite more organizations and individuals to join and co-create impact. When change becomes a shared and transferable force — passed on and echoed across sectors — its impact truly endures and multiplies.

Love Binti warmly invites you to step into the next decade with us.

Turning vision into reality requires shared commitment. Every act of support becomes a foundation for the steps ahead, allowing seeds of hope to reach farther. This is more than a donation — it is a shared belief and a promise to life.

As the journey continues, we look forward to witnessing together how your support can take root in communities around the world.

Ways to Give



Donation link



Official Website link



Facebook link

Follow Love Binti to learn more

Uganda Registered Number: FORR13735767NB

Instagram: [Love Binti International](#) | NGO

Youtube: [Love Binti International](#)

LinkedIn: [Love Binti International](#)

X: [Love Binti International](#)

Partner With Us

Asia

cc@lovebinti.org / 02-8252-0122 / +886-921-531-255

Uganda

cc.intl@lovebinti.org / +256-708-884-286 / +256-771-214-067



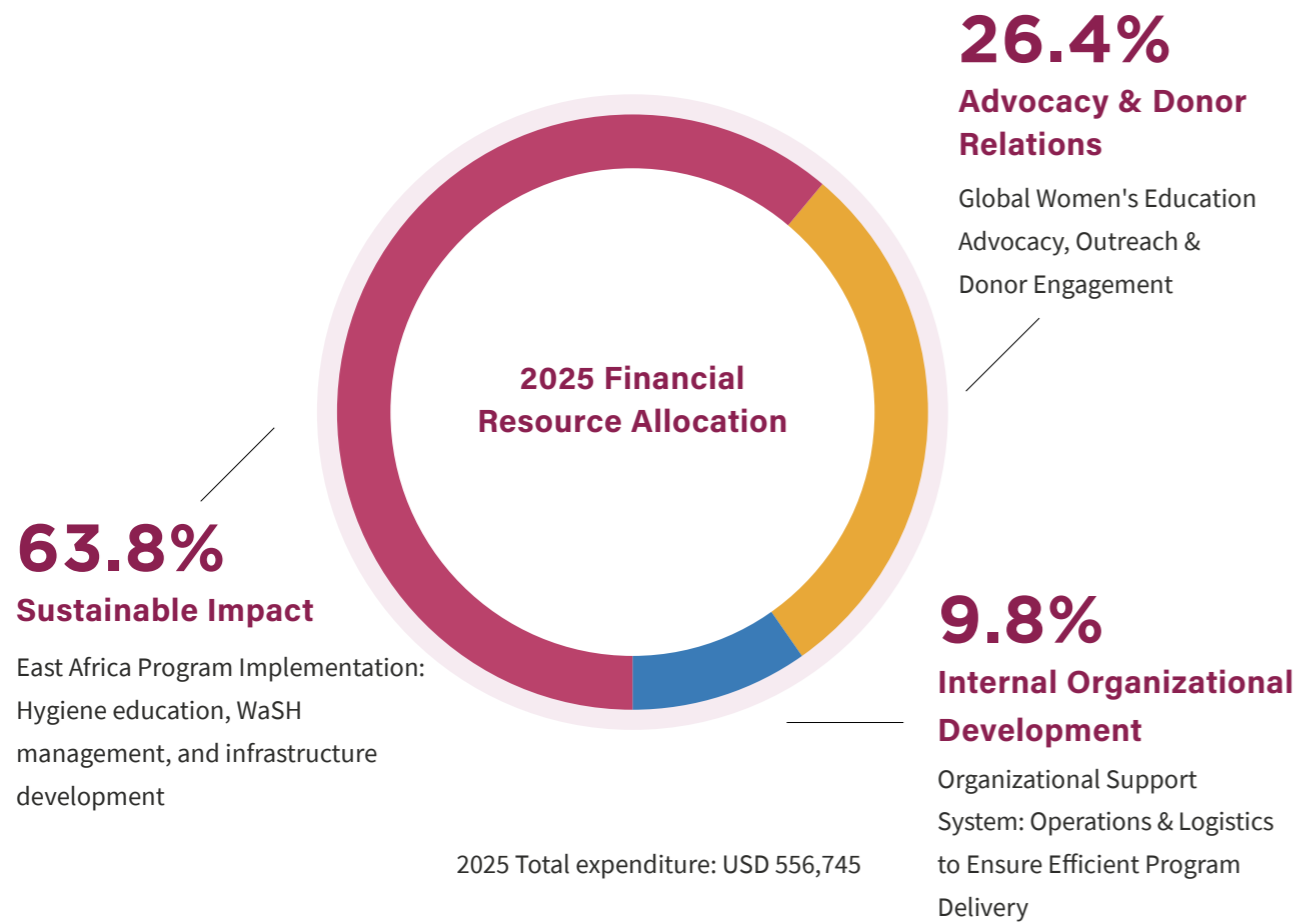
Appendix

2025 marks LBI's 10th anniversary. This edition presents our 10-year journey, with an appendix covering the 2025 annual financial report.

2025 Finance Report

Love Binti is committed to creating pathways to the future for every youth and woman seeking change. We believe true sustainability lies not in how long we stay, but in whether change continues to grow after we leave.

Each year, we invest in local capacity, enabling communities to carry their own aspirations forward. Through structured support, we ensure every program becomes community-led and self-sustaining. For us, the end of a project is the beginning of independence.



2025 Financial Overview (Income & Expenditure)

Item	Amount (USD)	Description
Total Annual Income	499,022	Includes donations (official website and other channels), government grants (Ministry of Foreign Affairs, ROC), and membership fees.
Total Annual Expenditure	556,745	Primarily allocated across three areas: East Africa program implementation, advocacy & outreach, and organizational operations.

This table reflects actual income and expenditures in Taiwan for the full year (Jan 1 – Dec 31, 2025). The 2025 financial statements have been audited by DASi CPA Firm.

2025 Expenditure Breakdown

2025 Total expenditure: USD 556,745, allocated across three main areas:

Item	Amount (USD)	%	Description
Sustainable Impact: East Africa Program Implementation			
WaSH Model	236,953	42.6%	We implement borehole and maintenance, rainwater filter systems, and menstrual hygiene workshops, ensuring children can learn in a dignified environment. Costs include program execution, local staff salaries and travel, and project development.
Community Empowerment Model	87,753	15.8%	We support sustainable livelihoods through women's tailoring training, cooperatives, and youth farmer empowerment programs. Costs include program execution, training delivery, and local implementation.
Cornerstone Infrastructure Model	30,254	5.4%	We build and maintain classrooms and community spaces, creating stable learning environments for children. Costs include construction materials, labor, and partnerships with international collaborators.
International Transfer Fees	496	0.1%	Bank and financial service fees required for international fund transfers to frontline operations.
Total expenditure includes team operations, staff training, project execution, and all travel, meals, accommodation, and visa costs across service regions, as well as travel and salary expenses for impact team program staff.			
Advocacy & Donor Relations			
Global Women's Education Advocacy	132,249	23.8%	Through campaigns, digital outreach, and events, we connect supporters with the realities faced by girls in Africa. Costs include website maintenance, digital marketing, content creation, fundraising events, advocacy, and international partnerships.
Outreach & Donor Engagement	14,468	2.6%	We maintain long-term, meaningful relationships with donors through regular updates and storytelling. Costs include communications, newsletters, mailing, transportation, and platform fees.
Internal Organizational Development			
Team Operations & Administration	16,752	3.0%	Administrative staff support finance, compliance, HR, and daily operations. Costs include salaries, staff welfare, and external service fees.
Office & Systems Support	37,820	6.8%	A stable and transparent working environment enables long-term impact. Costs include rent, utilities, taxes, depreciation, and administrative overhead.

We carefully steward every resource to strengthen local communities' capacity for sustainable growth. This financial overview reflects not only how funds are allocated, but also our commitment to long-term impact, operational efficiency, and accountability.



**Love Binti International
10th Anniversary Special Edition**